



# lookbook 2023

Westford<sup>®</sup>  
Mill

[westfordmill.com](https://westfordmill.com)



The New Season

# considered design.

Westford Mill® welcomes the new year with 7 brand new styles, all with the same focus on mindful, conscious design - continuing to introduce processes that have a lower impact on the environment. The new Natural Dyed collection exemplifies this ethos; made with sustainably derived dyes extracted from natural botanics, leaving as little trace on the environment as possible.

Discover the whole collection from Westford Mill®; pieces curated with the conscious customer in mind, without compromising on style.







**FOR THE  
PLANET®**  
— MEMBER —

1% for the Planet® is a partnership of companies that understand just how important it is that we protect the world we live in. Its members are concerned with the social and environmental impacts of industry, and know they have a part to play themselves. It encourages businesses to help safeguard the environment by donating 1% of their turnover to grassroots environmental groups making a difference in their local communities.

We have pledged 1% of annual sales to the preservation and restoration of the natural environment through our membership to 1% for the Planet®.







The Natural Dyed Collection

# foraged botanicals.

We've taken inspiration from natural elements to create a colour palette of soft hues that are derived from some of the planet's purest sources. No toxins, no harsh chemicals—just gentle shades for modern, minimal styling.





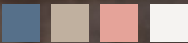
NEW

W281

Organic Natural Dyed Bag For Life

Made from 100% GOTS certified organic cotton, this classic silhouette is available in a range of beautiful soft hues, made from sustainably-derived dyes extracted from natural botanics.

Available colours: Indigo Blue, Myrobalan Stone, Pomegranate Rose or Sea Salt.







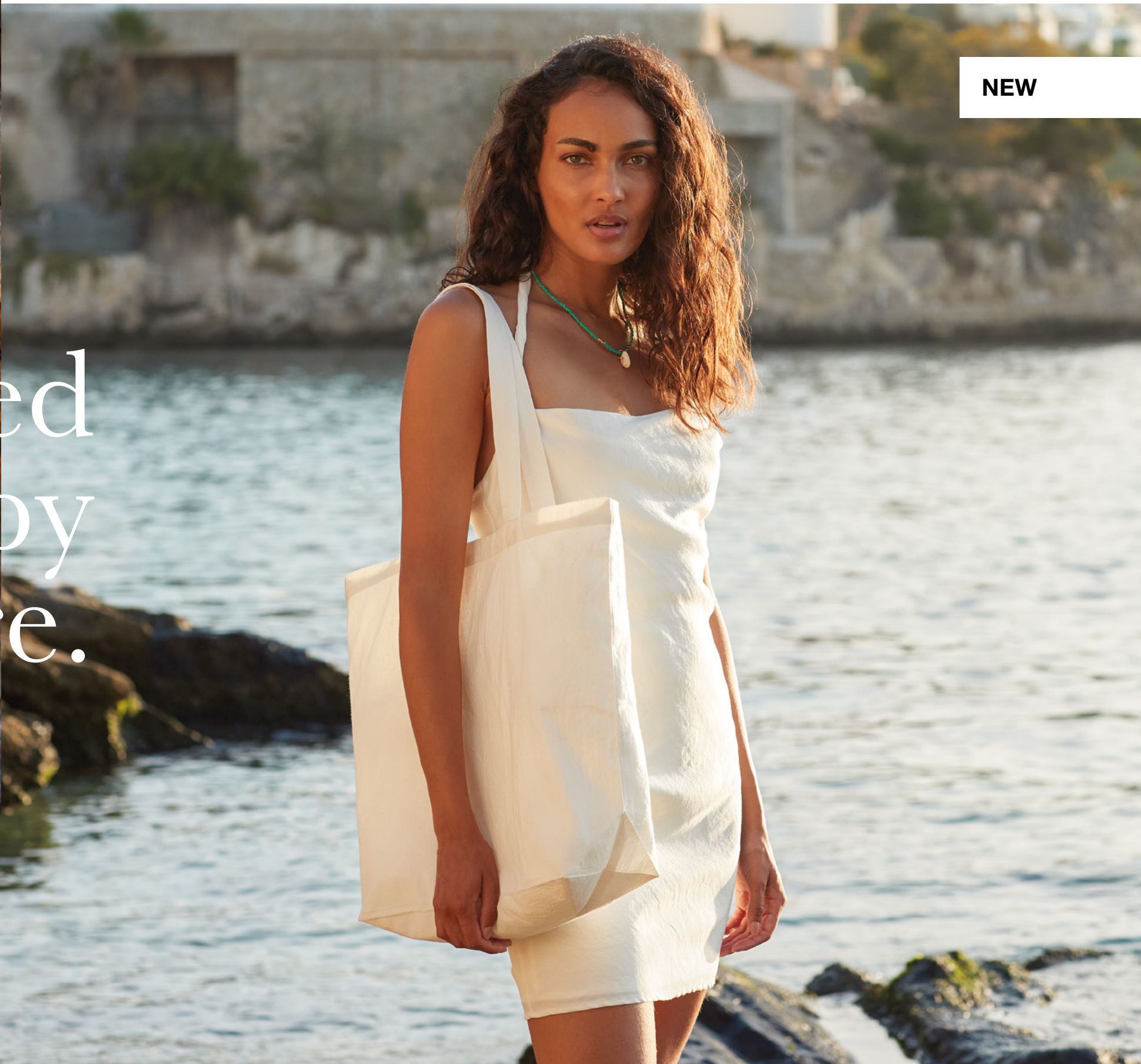
inspired  
by  
nature.

## W285

### Organic Natural Dyed Maxi Bag for Life

A versatile addition to any accessory collection, the W285's larger capacity means you can carry all of your essentials effortlessly, the 'maxi' surface also provides generous space for decoration. Made from 100% GOTS certified organic cotton, using natural elements to create a colour palette of beautiful soft hues.

**Available colours: Indigo Blue, Myrobalan Stone, Pomegranate Rose or Sea Salt.**



NEW





NEW

The Resort Collection

# decked -out.

**W626**

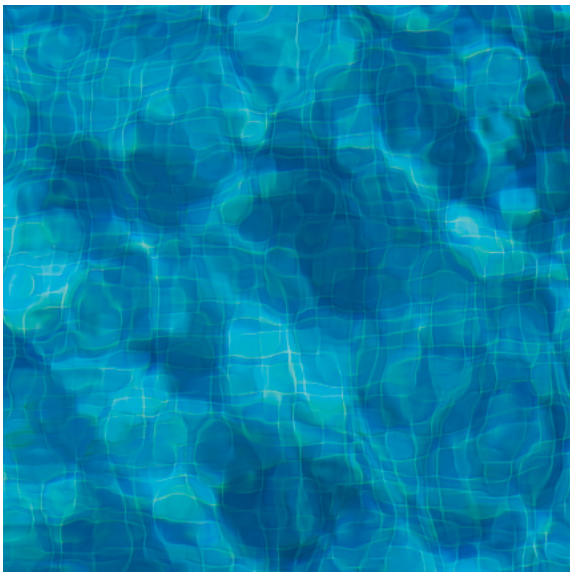
Fairtrade Cotton Deck Bag

Trends come and go but every accessory collection needs some forever pieces to rely on. This classic canvas deck bag – a trusty sidekick, whether you're grabbing groceries or hitting the beach. Crafted from Fairtrade cotton, you can be sure this design has been mindfully-made.





NEW



**W608**

Resort Canvas Bag

From exotic island hopping to exploring Europe's fashion capitals, this timeless design has got everything you need to tote your travel essentials in style. A boxy silhouette offers contemporary structure that will fast become a staple in any accessory collection.





The Oversized Collection

# larger than life.

This collection is all about minimal silhouettes that add maximum practicality, with pieces that are as classic as they are contemporary. We've added extra capacity without compromising elegance for the perfect blend of fashion and function, leaning into today's love for a casual, effortless aesthetic. Carry those everyday essentials in supersize style.





NEW COLOURS

## W696

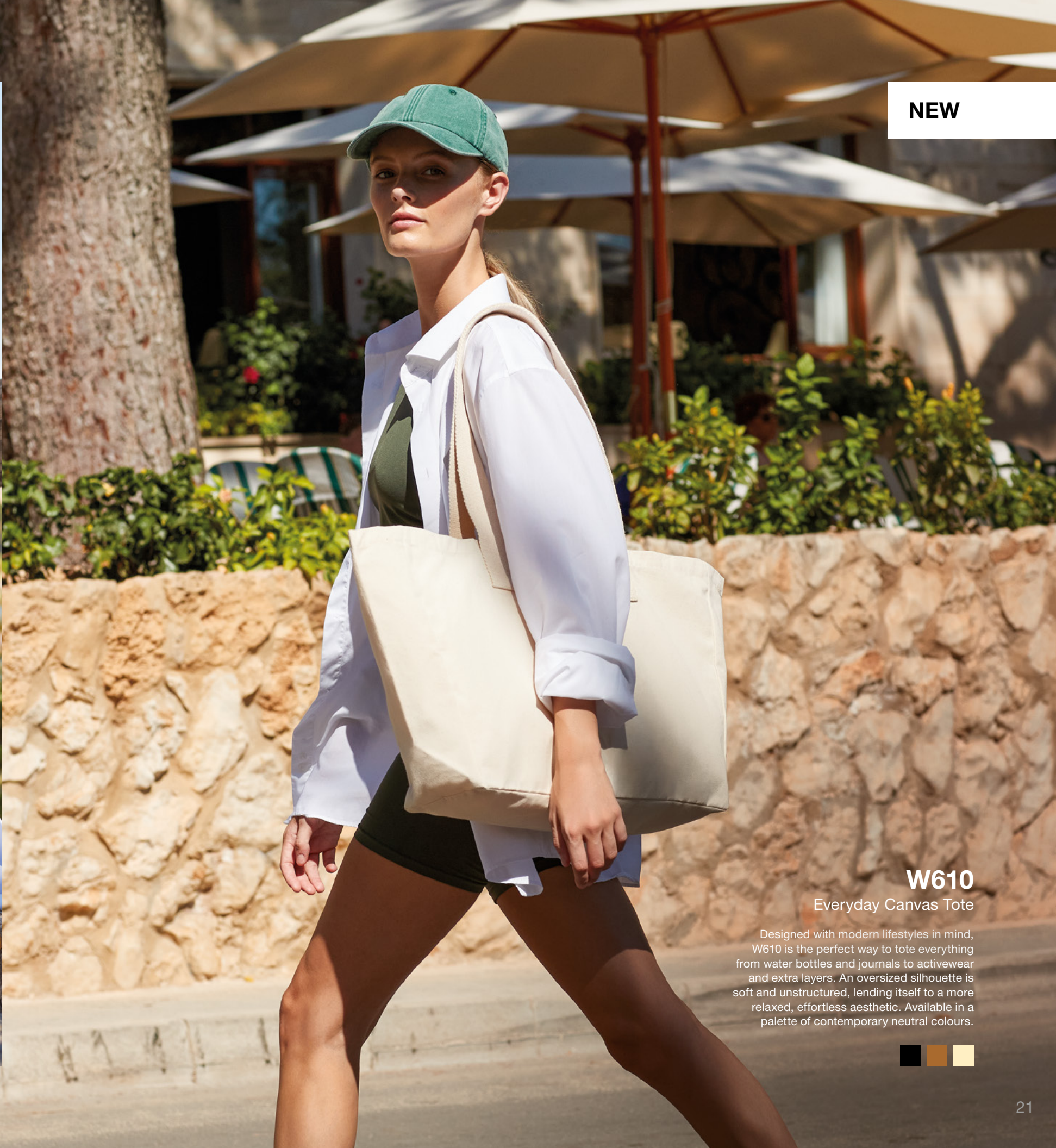
### Oversized Canvas Tote Bag

Taking a classic tote bag and supersizing it creates this modern, oversized design with extra-large capacity - its the perfect bag for day trips, guaranteed to fit in all of your everyday essentials. Available in a choice of core colourways.

New colours: Caramel, Olive Green.







**NEW**

## **W610** Everyday Canvas Tote

Designed with modern lifestyles in mind, W610 is the perfect way to tote everything from water bottles and journals to activewear and extra layers. An oversized silhouette is soft and unstructured, lending itself to a more relaxed, effortless aesthetic. Available in a palette of contemporary neutral colours.







## W452

Jute Base Canvas Tote XL

Supersize your cotton canvas collection with the W452. Stylish and spacious, this premium tote features a heavyweight cotton body and durable jute base to deliver natural and sustainable style.







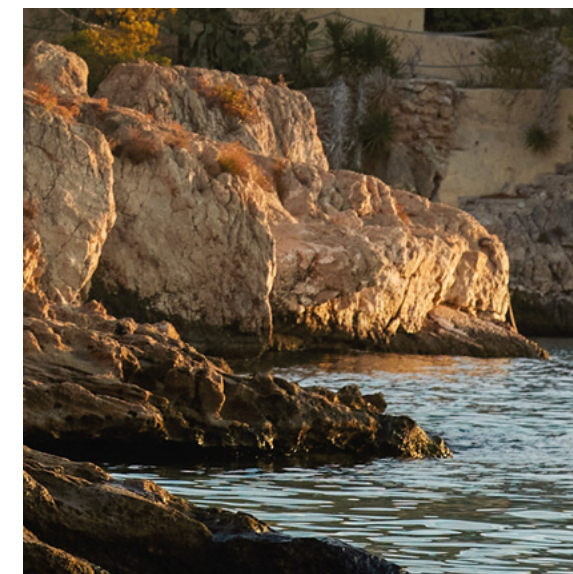
## W855

### EarthAware® Organic Marina Tote XL

This extra large design makes carrying shopping, gym kits or the whole family's beachwear a breeze, while the simple wooden toggle closure keeps everything safely in tow. Crafted in 100% organic cotton canvas – great for the eco-conscious end-user.







## W680

### Nautical Beach Bag

Horizontal stripes continue to influence the high street, and this Nautical Beach Bag acts as a key holiday piece for fans of the popular maxi-bag style. Chunky cotton rope carry handles offer classic nautical styling while premium brushed cotton canvas makes this a natural choice for a day at the beach.





W690

EarthAware® Organic Boat Bag

Made from 100% GOTS-certified cotton, this reliable tote design benefits from premium, hard-wearing fabric that is also eco-conscious. Featuring its signature contrast striped handles, available in choice of five diverse colourways, the stylish W690 is guaranteed to make a statement.





# no place like home.

Welcome to our considered collection of lifestyle pieces designed to truly make a house a home. Discover storage tubs and organisers through to tea towels and aprons, all thoughtfully-designed and eco-conscious. Make your personal environment reflect who you are while doing your bit for the planet.



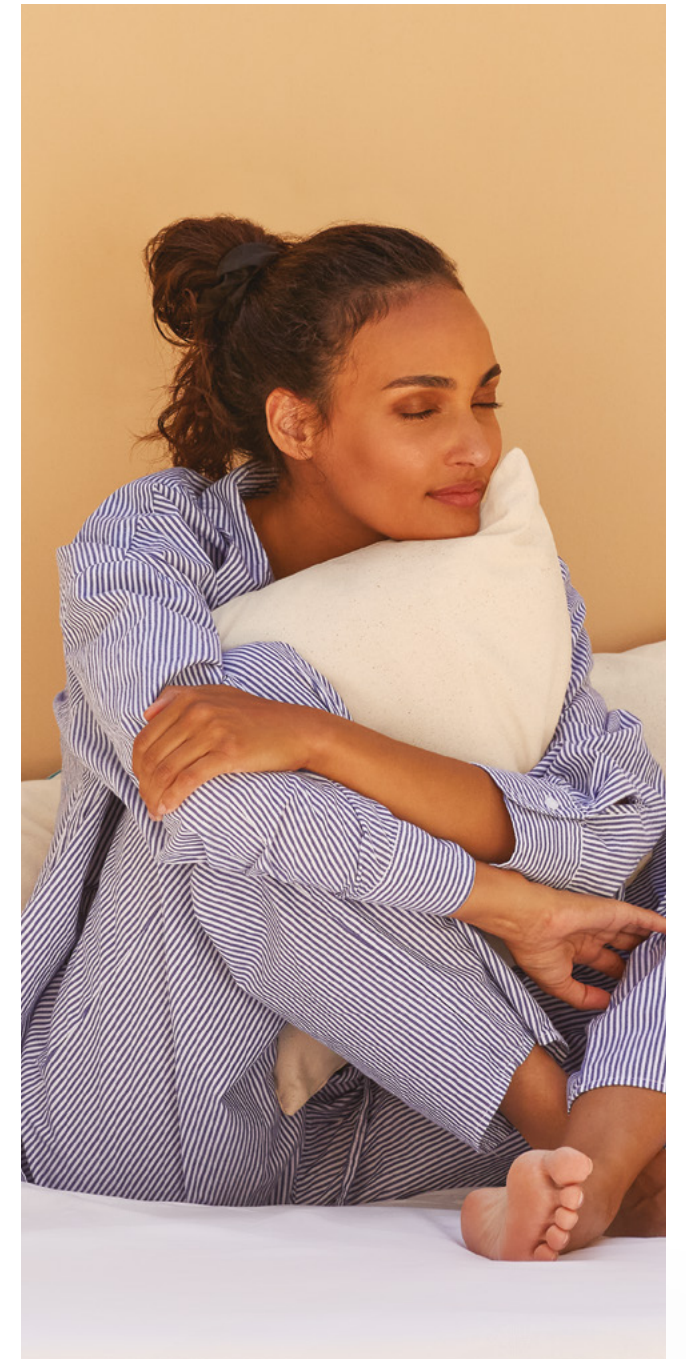


NEW

## W355

### Fairtrade Cotton Piped Cushion Cover

Designed to help curate the perfect space for any home, add a finishing touch with the W355. Featuring contrast piping and a block colour accent, it will easily compliment any design scheme. Available in a collection of soft, natural hues.



## W350

### Fairtrade Cotton Canvas Cushion Cover

These long-lasting and 100% Cotton Canvas cushion covers are perfect for decorating with print or embroidery. Available in a number of sizes, the covers are also Fairtrade certified, which means they come with added peace of mind as well as natural cotton comfort.







to have  
and  
to  
hold.

NEW

**W121**

Cotton Gift Bag with Ribbon Drawstring

Whether it's wedding favours, bridal shoes or organising accessories, these brushed cotton drawstring bags, in three sizes, are designed to meet your every need. Contrast ribbons create a premium finish for elevated gifting and personalisation.





## W572

### Reversible Canvas Organiser

Lift any space; whether home or office – disguise plant pots with a cotton canvas refresh or simply organise all of your stationary, the robust W572 is the perfect way to keep things looking clean and tidy whilst adding a minimal aesthetic to your environment. Available in 2 sizes and a range of natural, complementary colours.



## W574

### Canvas Storage Tub

Designed to help keep any home or office organised, the W574 is made from 100% premium cotton canvas and available in 3 sizes. A versatile solution for all of your storage needs.









## W364

### Fairtrade Cotton Adult Craft Apron

This simple and ethical design is beautifully finished with cotton herringbone neck and waist ties - delivering on style and quality. Suitable for a number of activities, whether you're baking, perfecting your skills as a barista or completing your craft as an artisan.





The Yoga Collection

# namaste.

Life is for living and for those who like living more slowly, our Yoga collection has got you covered. Modern-day movement calls for multifunctional features that allow you to focus on nothing but easy breathing and a free flow. Carry essentials to and from the studio with practical pieces that are minimal and simple to style. Both our EarthAware® Organic Yoga Mat Bag and EarthAware® Organic Yoga Tote are made from 100% organic cotton canvas so you can maintain a calm conscience too.







## W816

### EarthAware® Organic Yoga Mat Bag

Made from premium, organic cotton canvas, and perfectly designed to fit a yoga mat inside, the W816 is the perfect companion to allow you to focus all your energy. With an additional hidden valuables pocket you can easily keep all of those small essentials safe too. Available in a range of natural, earthy colourways.





## W818

### EarthAware® Organic Yoga Tote

Modern-day living calls for multifunctional design. Spacious, durable and with its external, easy-access yoga mat sleeve, the W818 is ideal for carrying all of your essentials. Made with heavyweight organic cotton canvas, it's your go-to bag for every class.







The Revive Collection

# consciously crafted.

The Revive Collection from Westford Mill® is a blend of pre-consumer cotton waste and post-consumer recycled polyester, crafted through a minimal process that helps reduce environmental impact. All made from GRS certified fabric, the process also gives each design its own unique finish, making for planet-friendly styling that's truly one-of-a-kind.





## W960

### Revive Recycled Gymsac

No bag collection is truly complete without a simple but versatile gymsac - an accessory staple, from sports classes to outdoor adventures. An eco-conscious alternative to other gymsacs.





## W961

### Revive Recycled Tote

The W961 is a timeless style, perfect for everyday use, paving the way for an eco-conscious future.





## W965

### Revive Recycled Maxi Tote

This extra-large take on the classic tote is as functional as it is eco-conscious. With its 18 litre capacity, it's the perfect multi-purpose companion for commutes, day trips or shopping on the go.



## W966

### Revive Recycled Stuff Bag

This versatile cotton stuff bag comes in a choice of four different sizes and two versatile colourways. Each features a classic drawcord closure for simple but effective storage.





## W623

### Fairtrade Cotton Classic Shopper

This classic shopper is a great all-rounder. Crafted from 100% Fairtrade Cotton, you can rest assured that it's been made responsibly. The gusseted base and heavy 12oz cotton ensures it's ready to take on any trip.

New colours: Bottle Green, French Navy.



NEW COLOURS

NEW COLOURS

## W620

### Fairtrade Cotton Bottle Bag

Perfect for picnics, parties and gifting, this handy bottle bag uses 100% Fairtrade cotton, so comes with the added feel-good factor of shopping responsibly.

New colours: Bottle Green, Light Grey.





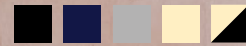


## W671

Fairtrade Cotton Camden Shopper

The W671 fuses fashion and ethics; the colour contrast handle adds a retail touch and it has been crafted in responsibly sourced 100% Fairtrade Cotton, giving you peace of mind.

New colours: French Navy, Light Grey.



**NEW COLOURS**





Westford<sup>®</sup>  
Mill

[westfordmill.com](https://westfordmill.com)

Colour representation is only as accurate as the printing process will allow.  
© 2023 – Beechfield Brands Ltd. All Rights Reserved.



**FOR THE  
PLANET**  
— MEMBER —